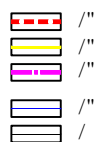


	"	"	"	"	"	"	"
	"	"	"	"	"	"	"
/322;;."	"32326."	"32327."	"32328."	"32342."	"3236:."	"32442."	/32573."
32565."	"32572."	/32597."	/32"	"	"	"332132"	" 0" 0
*	"	"	"	"32"	" 0	"	+



• 3 /"
 <345 /"
 7; <4-222222 /"
 0 /"

"3" "43

7; 3: 5722425

"4" "43

[illegible]

" " " "

" "

" " " " " "

/322; ;." "32326." "32327." "32328." "32342." "3236:." "32442." /32573." "32565." "32572." /32597." /32" "

"332132" " " 0" 0 "*" " " 0 " " " " " +





This aerial map displays a proposed road layout overlaid on a satellite image. The layout features a main road corridor running vertically on the right side, with several branches extending horizontally and diagonally to the left. The proposed roads are marked with yellow solid lines, while existing or boundary lines are shown with red dashed lines. A purple line is also visible in the lower-left quadrant, possibly indicating a different type of boundary or a specific alignment.

Key features and labels on the map include:

- Property Boundaries:** Black lines delineate various land parcels, some of which are labeled with numbers like 877, 668, 667, 666, 878, 3995, 564, 563, 566, 665, 3453*4+, 3453*3+, 348, 359, 362, 363, 364, 365, 366, 367, 368, 369, 35, 48, 49, 47, 46, 45, 44, 43, 42, 41, 40, 39, 38, 37, 36, 35, 34, 33, 32, 31, 30, 29, 28, 27, 26, 25, 24, 23, 22, 21, 20, 19, 18, 17, 16, 15, 14, 13, 12, 11, 10, 9, 8, 7, 6, 5, 4, 3, 2, 1.
- Proposed Road Layout:** Yellow solid lines indicate the main road corridor and its branches. Red dashed lines show existing or boundary lines. A purple line is also visible in the lower-left quadrant.
- Labels and Markers:**
 - Blue text labels: "7; 3: 5722323" and "7; 3: 5722425".
 - Black dots with numbers: 89, 88, 87, 86, 85, 84, 83, 82, 81, 80, 79, 78, 77, 76, 75, 74, 73, 72, 71, 70, 69, 68, 67, 66, 65, 64, 63, 62, 61, 60, 59, 58, 57, 56, 55, 54, 53, 52, 51, 50, 49, 48, 47, 46, 45, 44, 43, 42, 41, 40, 39, 38, 37, 36, 35, 34, 33, 32, 31, 30, 29, 28, 27, 26, 25, 24, 23, 22, 21, 20, 19, 18, 17, 16, 15, 14, 13, 12, 11, 10, 9, 8, 7, 6, 5, 4, 3, 2, 1.
 - Black text labels: 877, 668, 667, 666, 878, 3995, 564, 563, 566, 665, 3453*4+, 3453*3+, 348, 359, 362, 363, 364, 365, 366, 367, 368, 369, 35, 48, 49, 47, 46, 45, 44, 43, 42, 41, 40, 39, 38, 37, 36, 35, 34, 33, 32, 31, 30, 29, 28, 27, 26, 25, 24, 23, 22, 21, 20, 19, 18, 17, 16, 15, 14, 13, 12, 11, 10, 9, 8, 7, 6, 5, 4, 3, 2, 1.

"	"	"	"	"3	"3<4222	"8"	"43
---	---	---	---	----	---------	-----	-----

This aerial map displays a proposed road alignment, likely for a new highway or major thoroughfare. The alignment is shown as a dashed red line with a solid yellow centerline, running diagonally from the top left towards the bottom right. Stationing markers are placed along the alignment, including 887, 886, 885, 884, 883, 882, 881, 880, 879, 878, 877, 876, 875, 874, 873, 872, 871, 870, 869, 868, 867, 866, 865, 864, 863, 862, 861, 860, 859, 858, 857, 856, 855, 854, 853, 852, 851, 850, 849, 848, 847, 846, 845, 844, 843, 842, 841, 840, 839, 838, 837, 836, 835, 834, 833, 832, 831, 830, 829, 828, 827, 826, 825, 824, 823, 822, 821, 820, 819, 818, 817, 816, 815, 814, 813, 812, 811, 810, 809, 808, 807, 806, 805, 804, 803, 802, 801, 800, 799, 798, 797, 796, 795, 794, 793, 792, 791, 790, 789, 788, 787, 786, 785, 784, 783, 782, 781, 780, 779, 778, 777, 776, 775, 774, 773, 772, 771, 770, 769, 768, 767, 766, 765, 764, 763, 762, 761, 760, 759, 758, 757, 756, 755, 754, 753, 752, 751, 750, 749, 748, 747, 746, 745, 744, 743, 742, 741, 740, 739, 738, 737, 736, 735, 734, 733, 732, 731, 730, 729, 728, 727, 726, 725, 724, 723, 722, 721, 720, 719, 718, 717, 716, 715, 714, 713, 712, 711, 710, 709, 708, 707, 706, 705, 704, 703, 702, 701, 700, 699, 698, 697, 696, 695, 694, 693, 692, 691, 690, 689, 688, 687, 686, 685, 684, 683, 682, 681, 680, 679, 678, 677, 676, 675, 674, 673, 672, 671, 670, 669, 668, 667, 666, 665, 664, 663, 662, 661, 660, 659, 658, 657, 656, 655, 654, 653, 652, 651, 650, 649, 648, 647, 646, 645, 644, 643, 642, 641, 640, 639, 638, 637, 636, 635, 634, 633, 632, 631, 630, 629, 628, 627, 626, 625, 624, 623, 622, 621, 620, 619, 618, 617, 616, 615, 614, 613, 612, 611, 610, 609, 608, 607, 606, 605, 604, 603, 602, 601, 600, 599, 598, 597, 596, 595, 594, 593, 592, 591, 590, 589, 588, 587, 586, 585, 584, 583, 582, 581, 580, 579, 578, 577, 576, 575, 574, 573, 572, 571, 570, 569, 568, 567, 566, 565, 564, 563, 562, 561, 560, 559, 558, 557, 556, 555, 554, 553, 552, 551, 550, 549, 548, 547, 546, 545, 544, 543, 542, 541, 540, 539, 538, 537, 536, 535, 534, 533, 532, 531, 530, 529, 528, 527, 526, 525, 524, 523, 522, 521, 520, 519, 518, 517, 516, 515, 514, 513, 512, 511, 510, 509, 508, 507, 506, 505, 504, 503, 502, 501, 500, 499, 498, 497, 496, 495, 494, 493, 492, 491, 490, 489, 488, 487, 486, 485, 484, 483, 482, 481, 480, 479, 478, 477, 476, 475, 474, 473, 472, 471, 470, 469, 468, 467, 466, 465, 464, 463, 462, 461, 460, 459, 458, 457, 456, 455, 454, 453, 452, 451, 450, 449, 448, 447, 446, 445, 444, 443, 442, 441, 440, 439, 438, 437, 436, 435, 434, 433, 432, 431, 430, 429, 428, 427, 426, 425, 424, 423, 422, 421, 420, 419, 418, 417, 416, 415, 414, 413, 412, 411, 410, 409, 408, 407, 406, 405, 404, 403, 402, 401, 400, 399, 398, 397, 396, 395, 394, 393, 392, 391, 390, 389, 388, 387, 386, 385, 384, 383, 382, 381, 380, 379, 378, 377, 376, 375, 374, 373, 372, 371, 370, 369, 368, 367, 366, 365, 364, 363, 362, 361, 360, 359, 358, 357, 356, 355, 354, 353, 352, 351, 350, 349, 348, 347, 346, 345, 344, 343, 342, 341, 340, 339, 338, 337, 336, 335, 334, 333, 332, 331, 330, 329, 328, 327, 326, 325, 324, 323, 322, 321, 320, 319, 318, 317, 316, 315, 314, 313, 312, 311, 310, 309, 308, 307, 306, 305, 304, 303, 302, 301, 300, 299, 298, 297, 296, 295, 294, 293, 292, 291, 290, 289, 288, 287, 286, 285, 284, 283, 282, 281, 280, 279, 278, 277, 276, 275, 274, 273, 272, 271, 270, 269, 268, 267, 266, 265, 264, 263, 262, 261, 260, 259, 258, 257, 256, 255, 254, 253, 252, 251, 250, 249, 248, 247, 246, 245, 244, 243, 242, 241, 240, 239, 238, 237, 236, 235, 234, 233, 232, 231, 230, 229, 228, 227, 226, 225, 224, 223, 222, 221, 220, 219, 218, 217, 216, 215, 214, 213, 212, 211, 210, 209, 208, 207, 206, 205, 204, 203, 202, 201, 200, 199, 198, 197, 196, 195, 194, 193, 192, 191, 190, 189, 188, 187, 186, 185, 184, 183, 182, 181, 180, 179, 178, 177, 176, 175, 174, 173, 172, 171, 170, 169, 168, 167, 166, 165, 164, 163, 162, 161, 160, 159, 158, 157, 156, 155, 154, 153, 152, 151, 150, 149, 148, 147, 146, 145, 144, 143, 142, 141, 140, 139, 138, 137, 136, 135, 134, 133, 132, 131, 130, 129, 128, 127, 126, 125, 124, 123, 122, 121, 120, 119, 118, 117, 116, 115, 114, 113, 112, 111, 110, 109, 108, 107, 106, 105, 104, 103, 102, 101, 100, 99, 98, 97, 96, 95, 94, 93, 92, 91, 90, 89, 88, 87, 86, 85, 84, 83, 82, 81, 8

'9" "43

7; 3: 5722323

7; 3: 2332323

:" "43

"	"	" "	"3	"3<4222	";" "43
---	---	-----	----	---------	---------

[illegible]

"	"	"	"	"3	"3<4222	"32"	"43
---	---	---	---	----	---------	------	-----

"3<4222

"32" "43"

This aerial map displays two proposed road alignments, labeled 5722323 and 5722425, overlaid on a satellite image of a rural area. The map includes various engineering annotations and stationing.

Alignment 5722323 (Blue Text):

- Stationing: 7+0, 7+1, 7+2, 7+3, 7+4, 7+5, 7+6, 7+7, 7+8, 7+9.
- Annotations: 3:3, 42, 43, 44, 45, 3:8, 3:9, 3:7, 3:6, 3:5, 3:4, 3:3, 3:2, 3:1, 3:0.
- Other labels: 3298, 3493, 822, 823, 824, 825, 826, 827, 828, 829.

Alignment 5722425 (Purple Text):

- Stationing: 7+0, 7+1, 7+2, 7+3, 7+4, 7+5, 7+6, 7+7, 7+8, 7+9.
- Annotations: 3:3, 42, 43, 44, 45, 3:8, 3:9, 3:7, 3:6, 3:5, 3:4, 3:3, 3:2, 3:1, 3:0.
- Other labels: 3298, 3493, 822, 823, 824, 825, 826, 827, 828, 829.

The map also shows a road intersection and a road labeled "Rd 100". The area is characterized by green fields and some buildings.

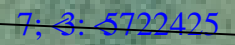
"	"	"	"	"3	"3<4222	"33"	"43
---	---	---	---	----	---------	------	-----

" " " "
" "
/322;;." "32326." "32327." "32328." "32342." "3236:." "32442." /32573." "32565." "32572." /32597." /32" "
"332132" " " " 0" 0 " * " " 32" " 0 " " " " +



" " " "

" "



"3

"35" "43

[illegible]

This is an aerial photograph of a baseball field, overlaid with a technical diagram. The diagram includes several colored lines: a red dashed line, a yellow solid line, a blue solid line, and a purple solid line. Numerous black dots are scattered across the field, many of which are labeled with numbers and symbols. For example, labels include '772', '46: 78+', '44939', '942', '46: 3: +', '448', '76:', '46: 34+', '449', '769', '46: 79+', '44:', '768', '46: 54+', '44:', '766', '46: 49+', '764', '46: 74+', '536+', '724', '6: 9', '6: 8', '6: 7', '6: 6', '6: 5', '6: 4', '6: 3', '6: 2', '46: 86+', '452', '972', '46: 87', '453', '6: 9', '6: 8', '536+', '454', '536+', '455', '575', '584', '6: 6', '6: 4', '536+', '456', '536+', '457', '57:', '59:', '82', '6', '7', '3', '392', '345', '328', '94', and '392'. There are also blue text labels: '7; 3: 5722323' in the upper left, '7; 3: 5722425' in the middle right, and '7; 3: 2322323' in the lower left. The background shows the green grass of the field and the brown dirt of the infield and bases.

" " " "

" " " " " " " " " " " "

"322; ;." "32326." "32327." "32328." "32342." "3236:." "32442." /32573." "32565." "32572." /32597." /32" "

"332132" " " 0" 0 " 0" "32" " 0 " " " " +



" " " " " "

" " " " " " " " " " " "

/322; ;." "32326." "32327." "32328." "32342." "3236:." "32442." /32573." "32565." "32572." /32597." /32" "

"332132" " " 0" 0 " 0 " 0 " 0 " 0 " 0 " 0 "



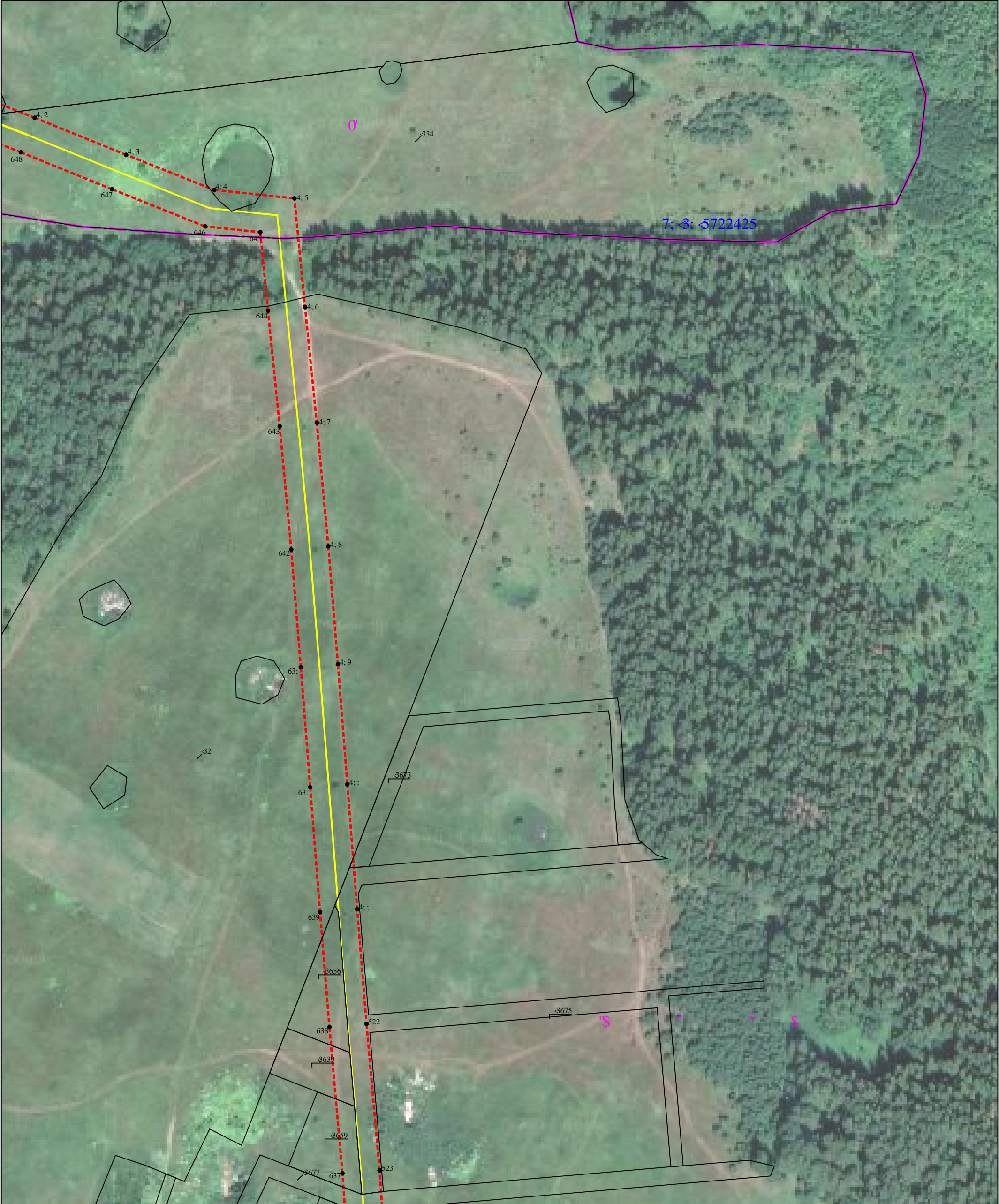
" " " "

" "

"322; ;." "32326." "32327." "32328." "32342." "3236:." "32442." /32573." "32565." "32572." /32597." /32" "

"332132" " " 0" 0 " " "32" " 0 " " " "

+



3;" "43

" " " "
" "
/322;;." "32326." "32327." "32328." "32342." "3236:." "32442." /32573." "32565." "32572." /32597." /32" "
"332132" " " 0" 0 "*" " "32" " 0" " " " +



" " " " "3 "3<4222 "42" "43

"43" "43

[illegible]

3	4	5
878	7787440 5	44677430 6
879	77879809;	4467771209;
87:	77885: 078	44677: 6094
87:	7788: ; 024	446783: 024
882	77898; 074	4467879604
883	778: 4305:	44678: 70:
884	778: : 6076	44678: ; 06
885	778; 6202;	446793306
886	778: : ; 084	44679430 7
887	779268068	4467955066
888	779327098	44679680: 1
889	7793830 5	446797: 0: 1
88:	77938: 0	44679860 4
88:	7795: 8027	4467: 4308
892	779597098	4467: 8907:
893	77972: 054	446822: 05
894	779759045	4467: 960 3
895	7797640 6	4467: 87024
896	779765097	4467: 830
897	779766084	4467: 8404
898	7797680	4467: 7: 09
899	7797820 6	4467: 88049
89:	779786086	4467: 89043
89:	77978605:	4467: 8: 047
8: 2	779787029	4467: 8: 087
8: 3	779785086	4467: 93085
8: 4	77977: 053	4467: : ; 09
8: 5	779778026	4467: : 9055
8: 6	7797450 4	44682560 5
8: 7	77975720: 1	4467: : 30 4
8: 8	779584079	4467: 52078
8: 9	77938705	44679: ; 059
8: :	7793740 8	446799: ; 069
8: 2	779367084	4467999097
8: ;	779323027	4467989057
8: 3	779264026	44679750 9
8: 4	778: ; 705	446796406
8: 5	778: 5708:	4467953085
8: 6	778: : 208:	446793: 0 7
8: 7	778: 350:	44679270: 1
8: 8	77897: 055	446789709;
8: 9	7788: : 0 5	446785805:
8: ;	77884: 066	4467825084
8: ;	778788098	446778: ; 06
922	7787640 4	446777806
923	778764064	446778: 0 8
924	77876308:	4467829043
925	77876208:	446786800
926	778762084	44678: 7069
927	7787590 5	446794609;
928	7787590 3	4467976025
929	778759045	44679: ; 0 5
92:	778758085	4467: 67063
92:	778758068	4467: : 50 4
932	778758053	4467: 390 7
3	7787580 9	4467: 390 8